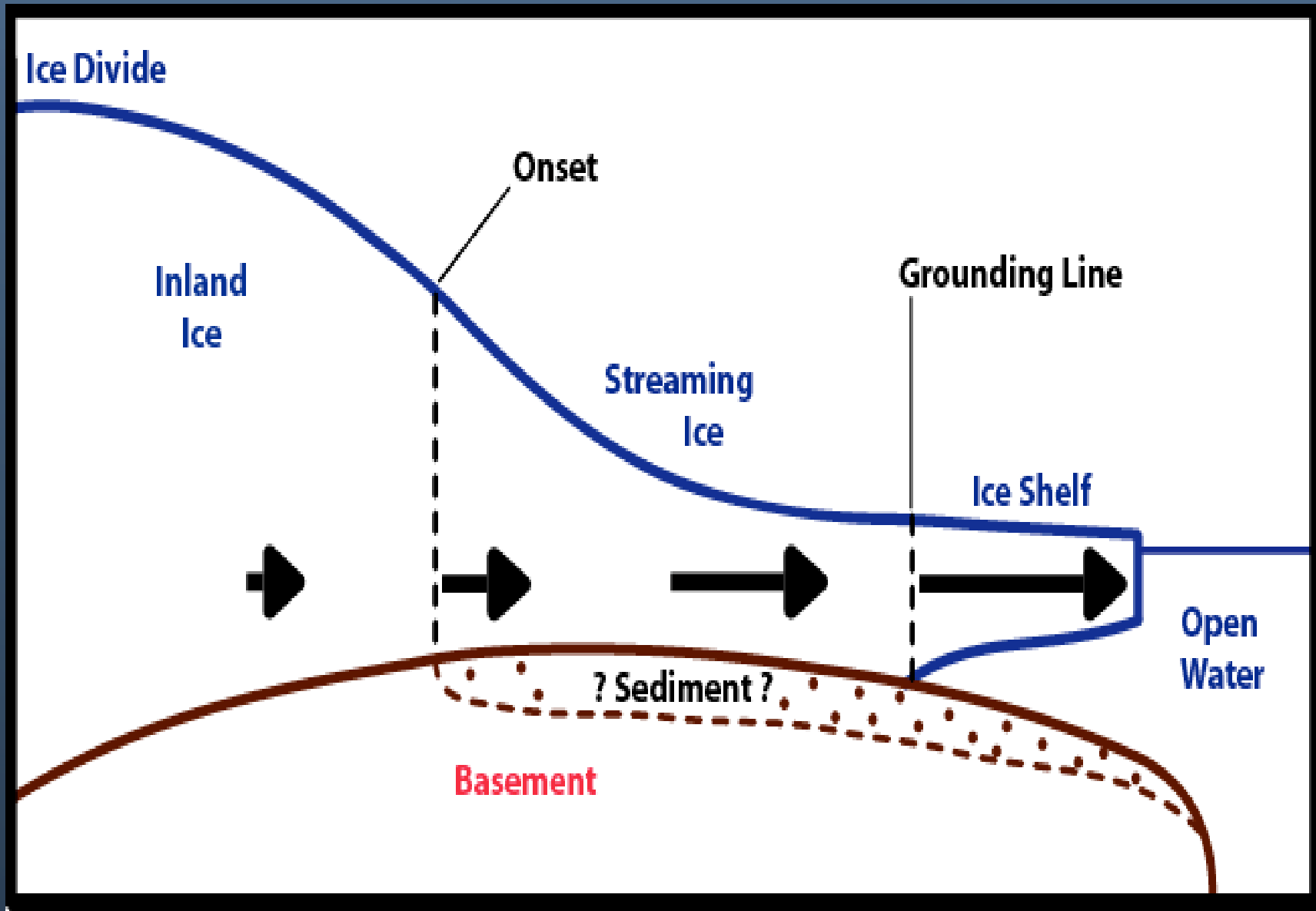


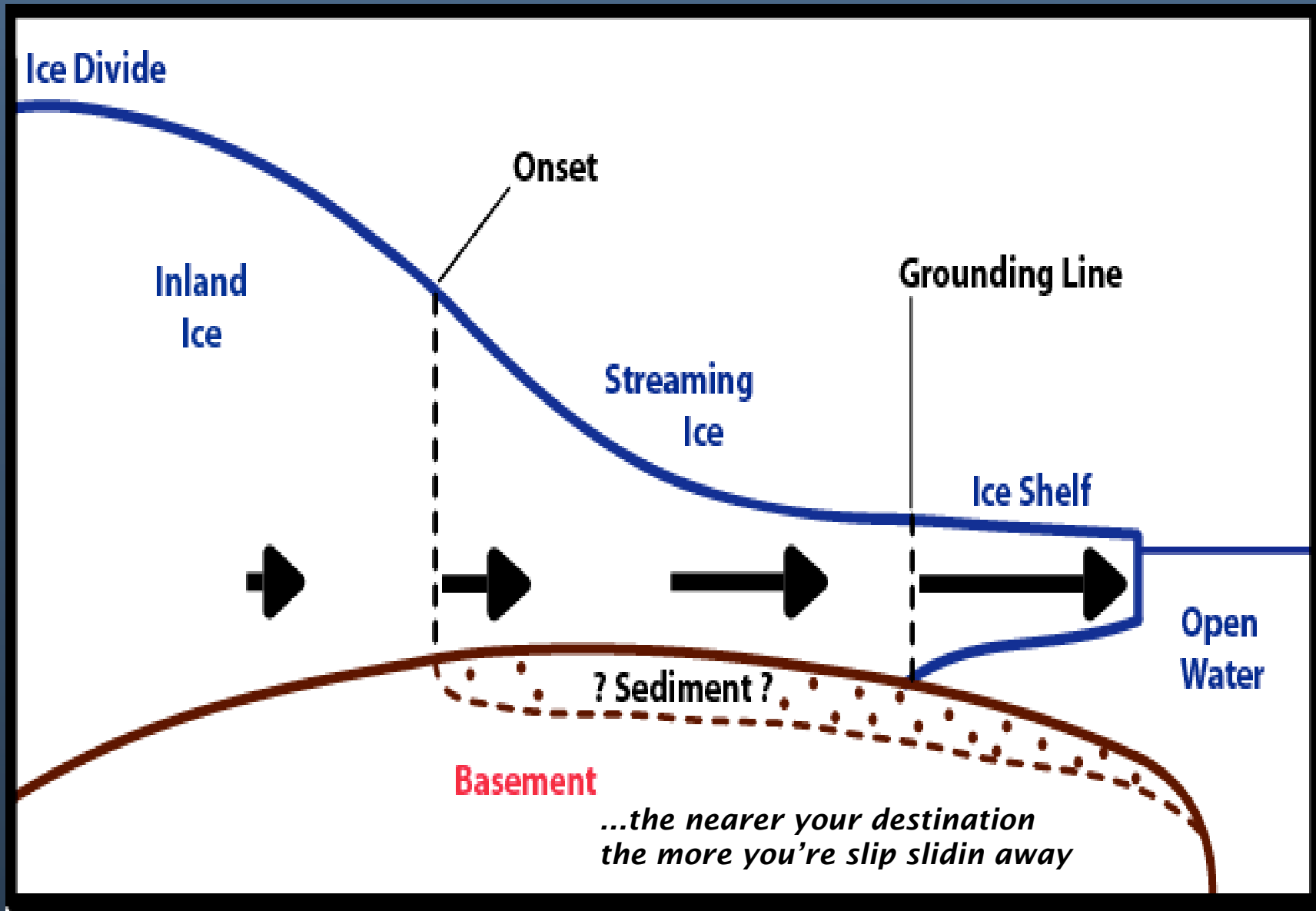
Slip Slidin' Away

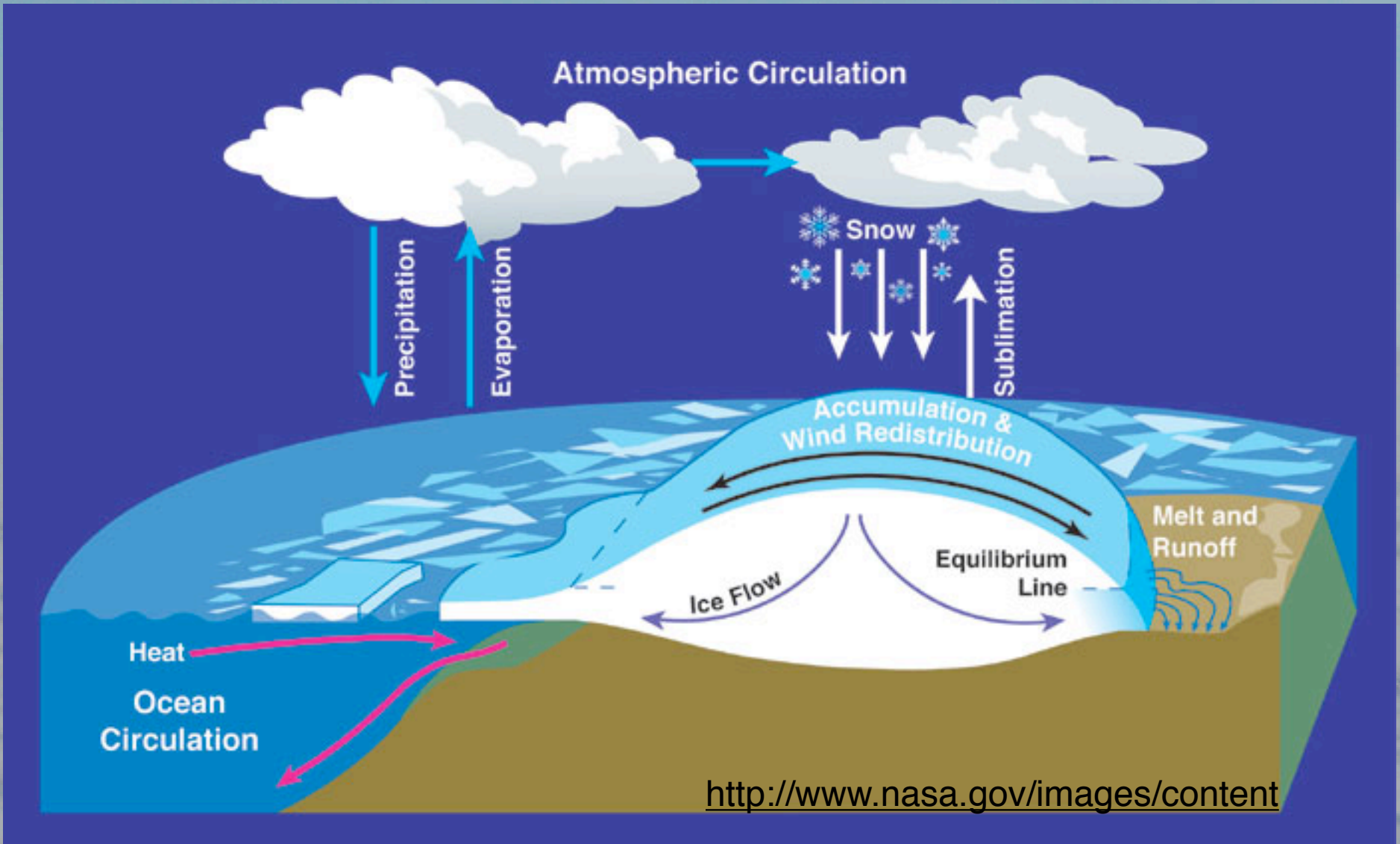
Sridhar Anandakrishnan
Penn State University









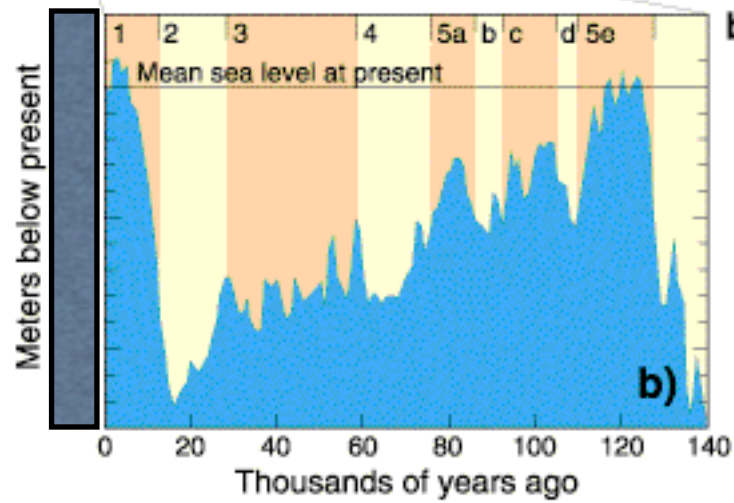
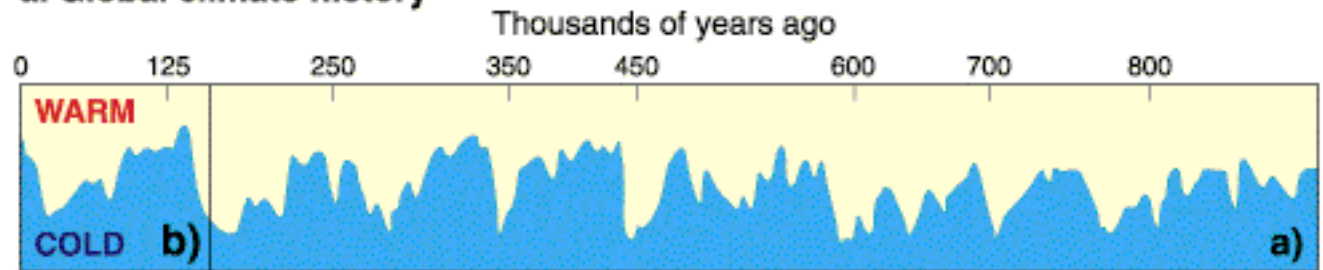


<http://www.nasa.gov/images/content>





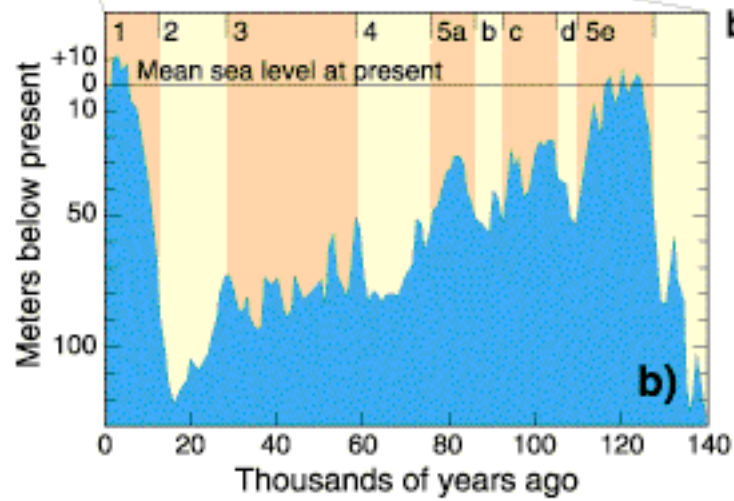
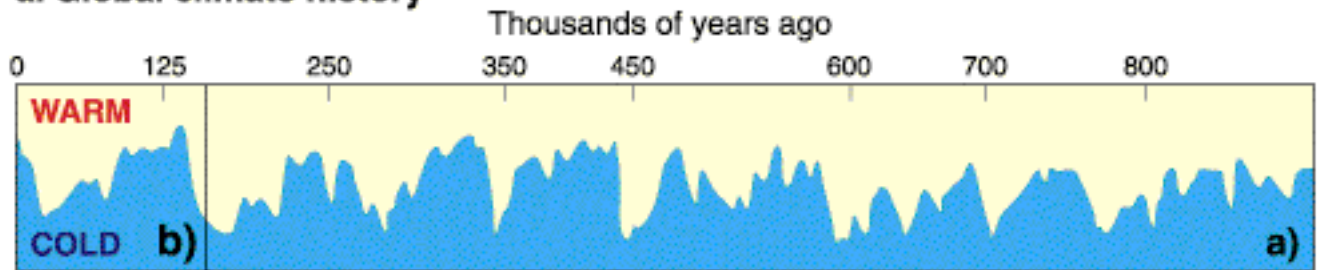
a. Global climate history



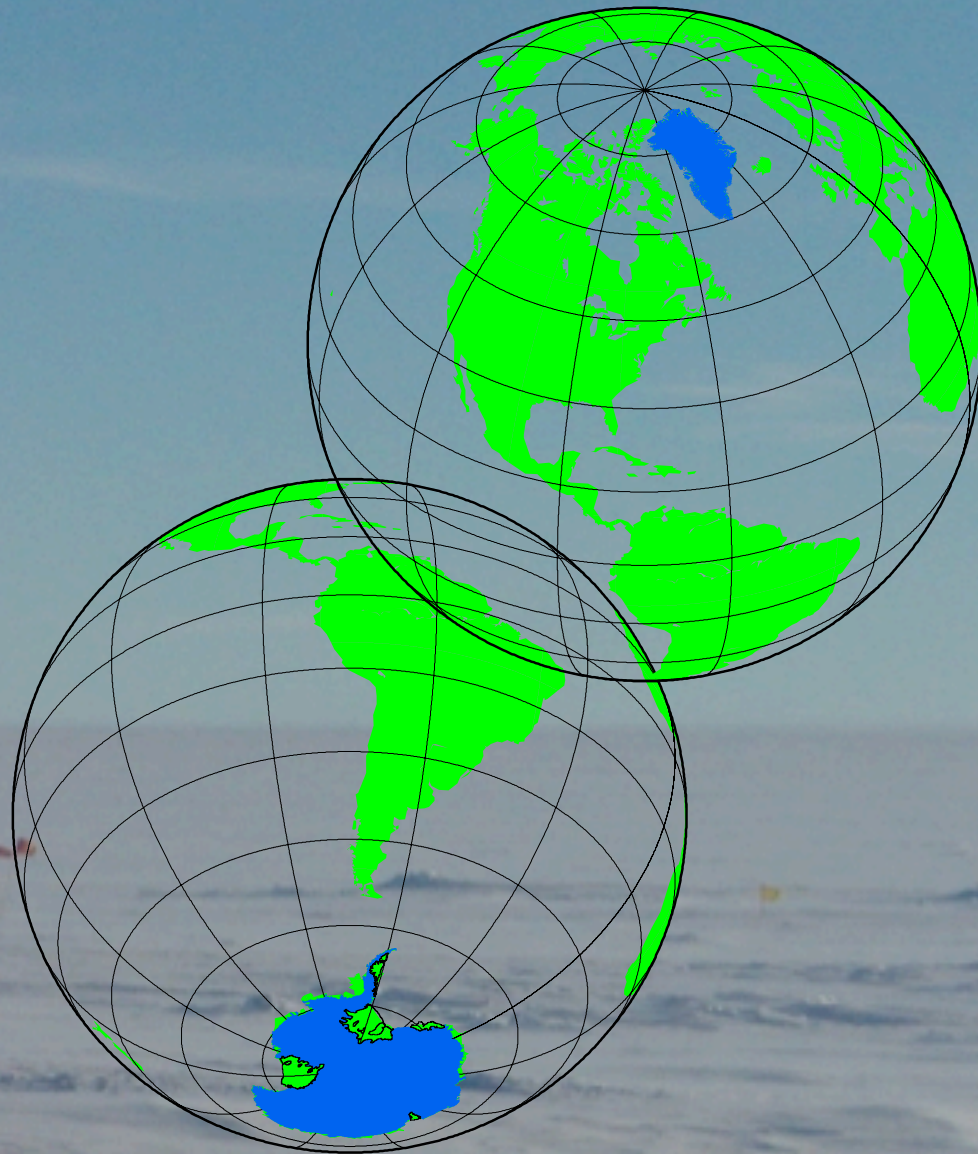
b. Late Quaternary sea-level history



a. Global climate history

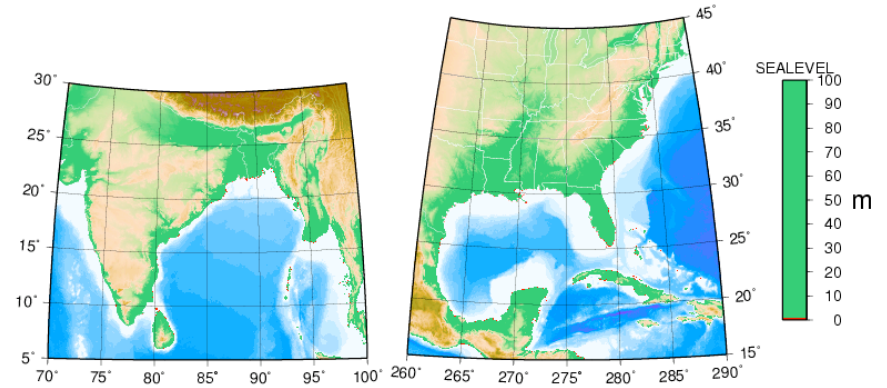


b. Late Quaternary sea-level history

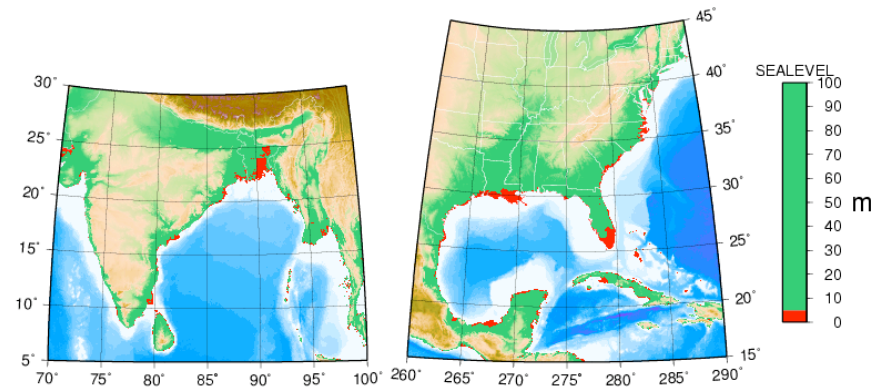


GMT 2006 Mar 2 11:20:48 Volumes/UserP/Users/sak/GMT/2poles.gmt

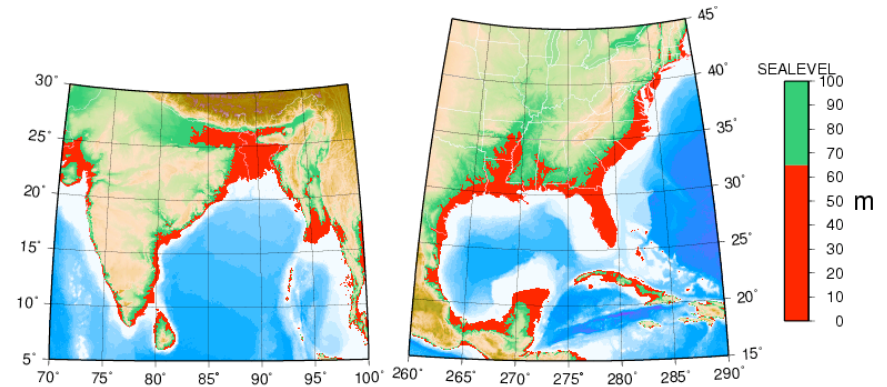
Sealevel impacts



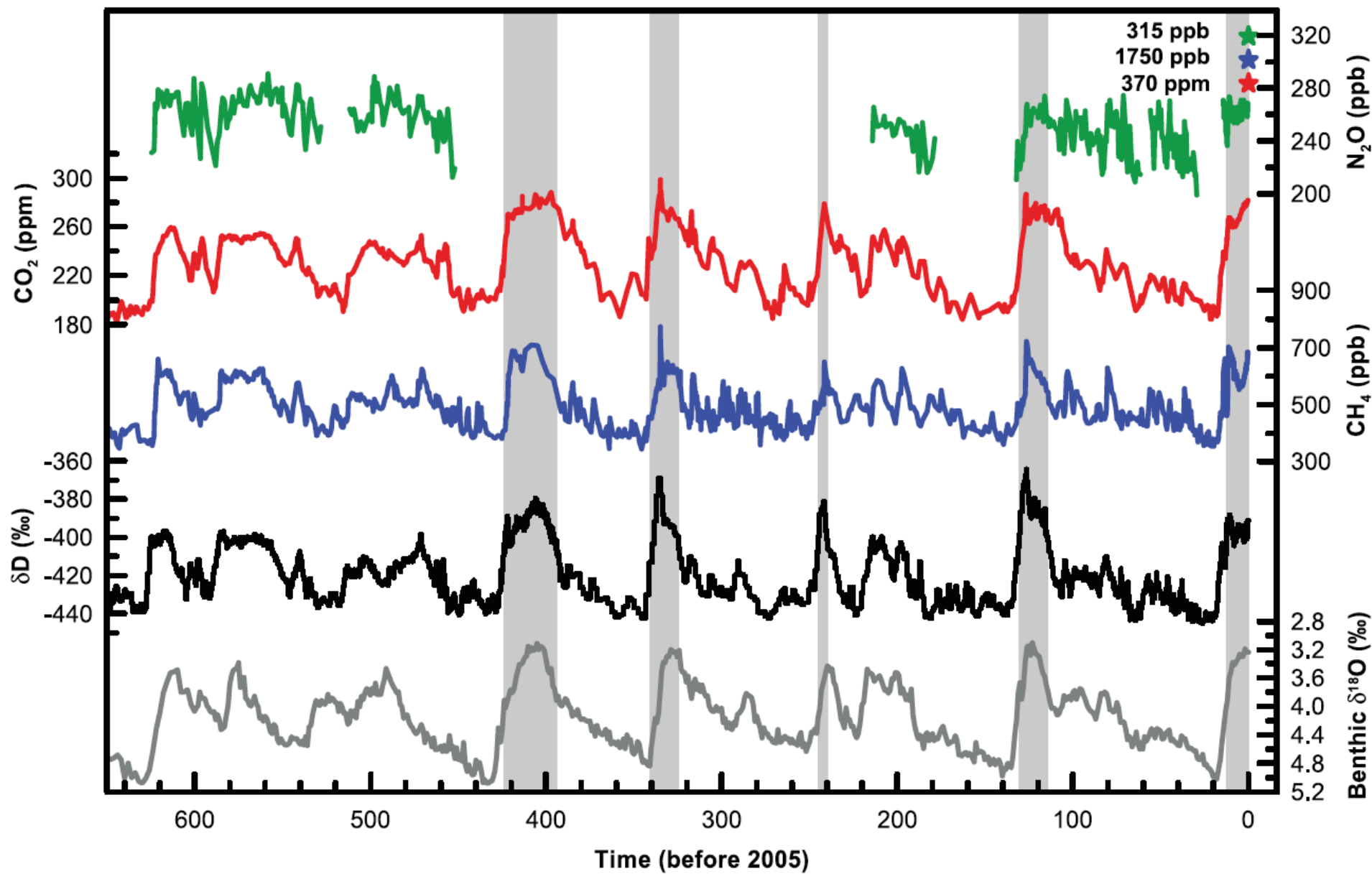
GMT 2006 Mar 13 21:09:00 Users/sak/GMT/sealevel.gmt

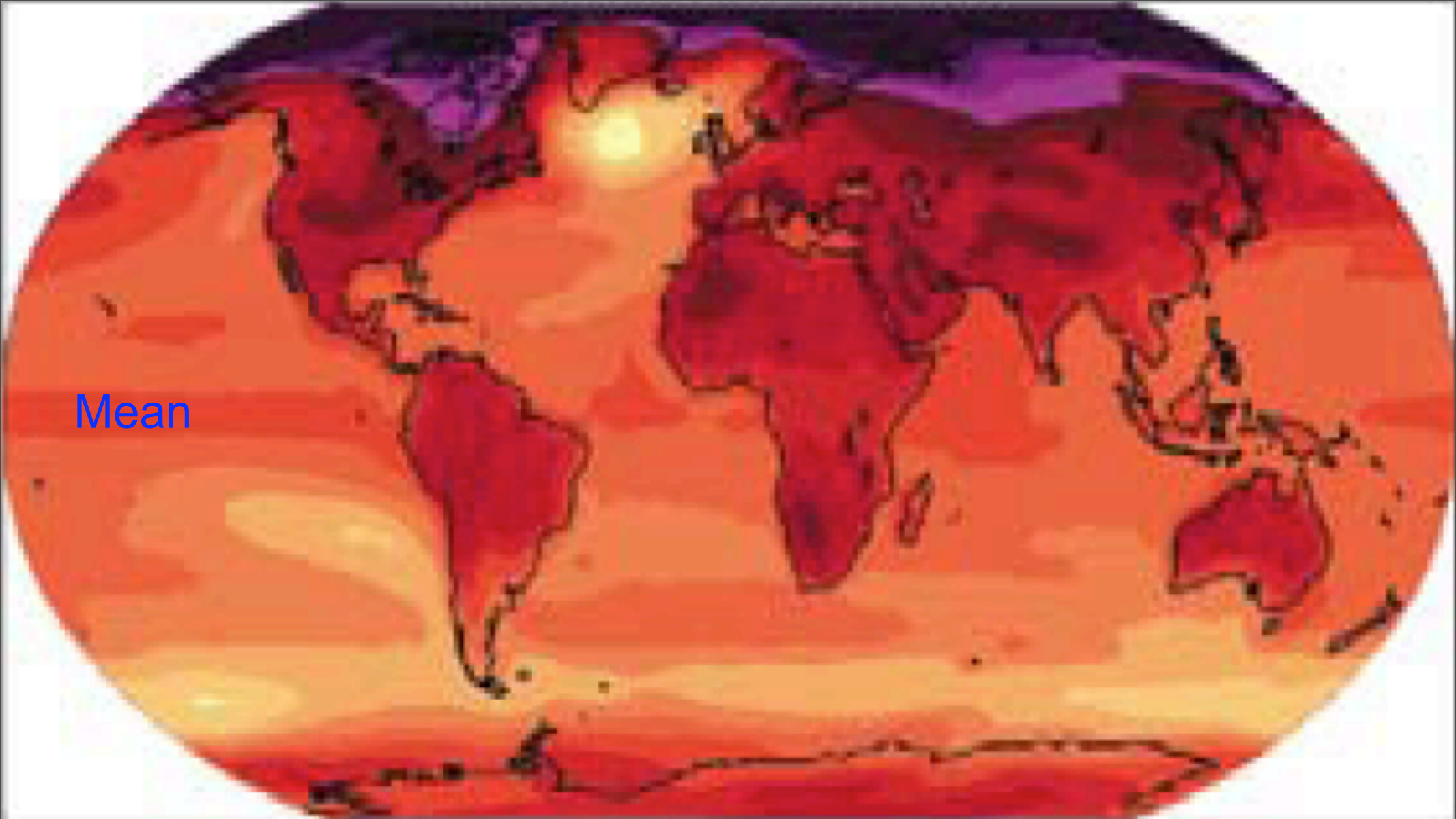


GMT 2006 Mar 13 21:09:30 Users/sak/GMT/sealevel.gmt



GMT 2006 Mar 13 21:11:02 Users/sak/GMT/sealevel.gmt





Mean



0 0.5 1 1.5 2 2.5 3 3.5 4 4.5 5 5.5 6 6.5 7 7.5

IPCC AR4 scenario A2 mean warming in 2090-99 vs. 1980-99

Mean

Where all the children get above-average warming.

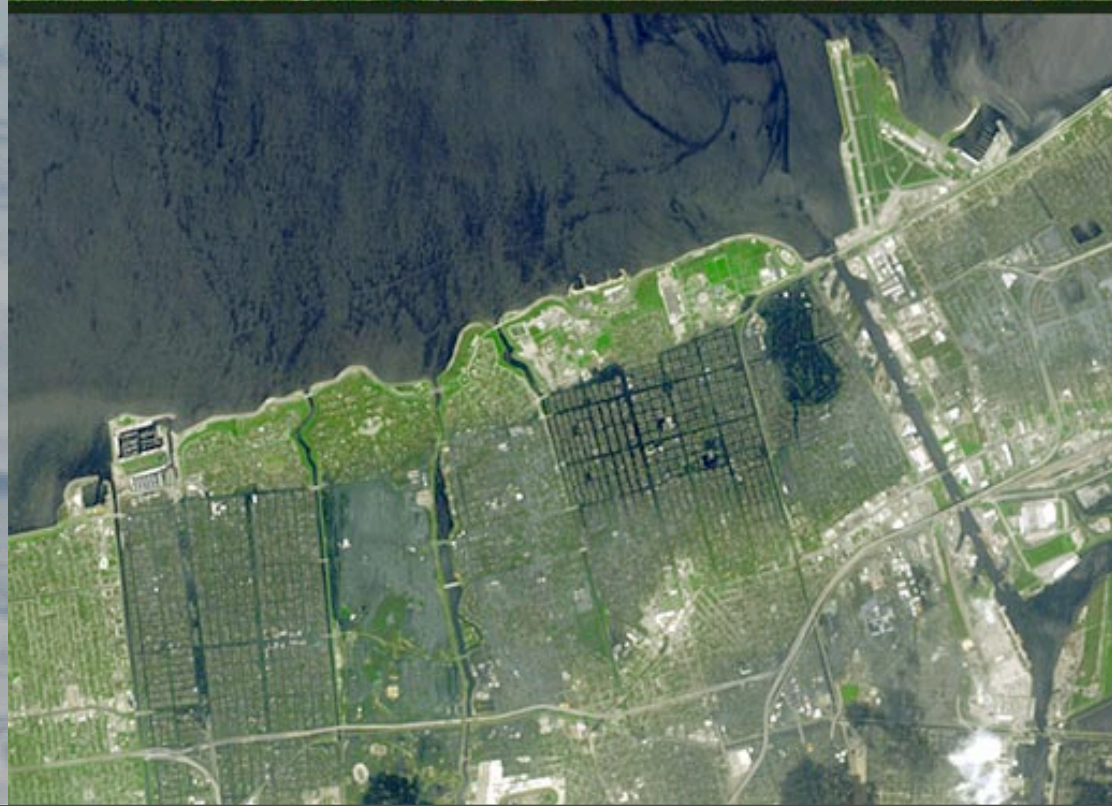


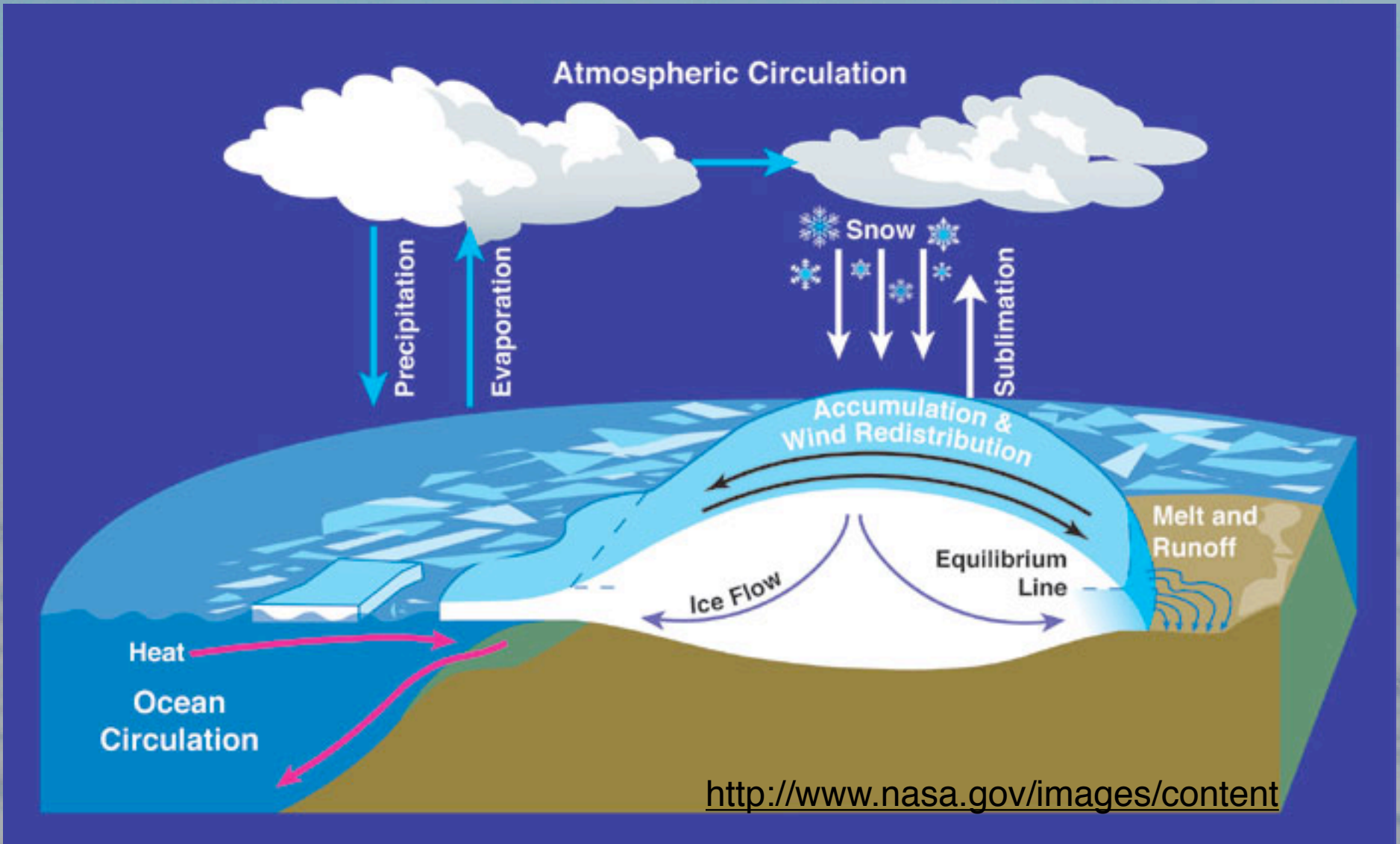




New Orleans,
before and after
Hurricane Katrina.

Images Terra, NASA/JPL





<http://www.nasa.gov/images/content>





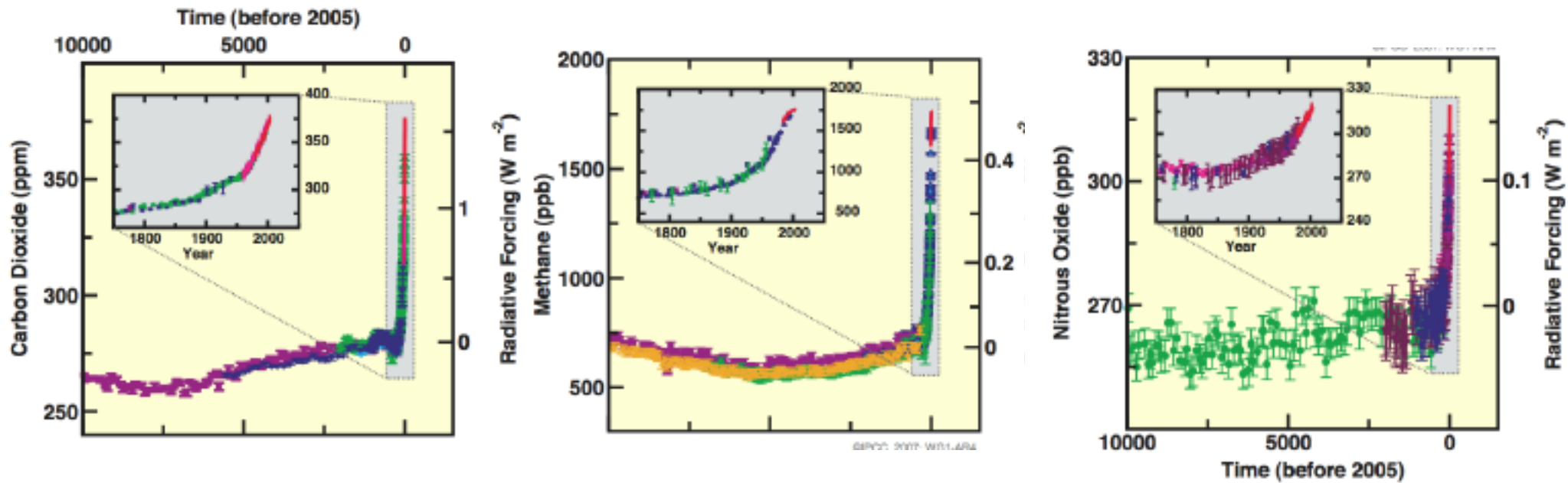


Photo:A Huerta

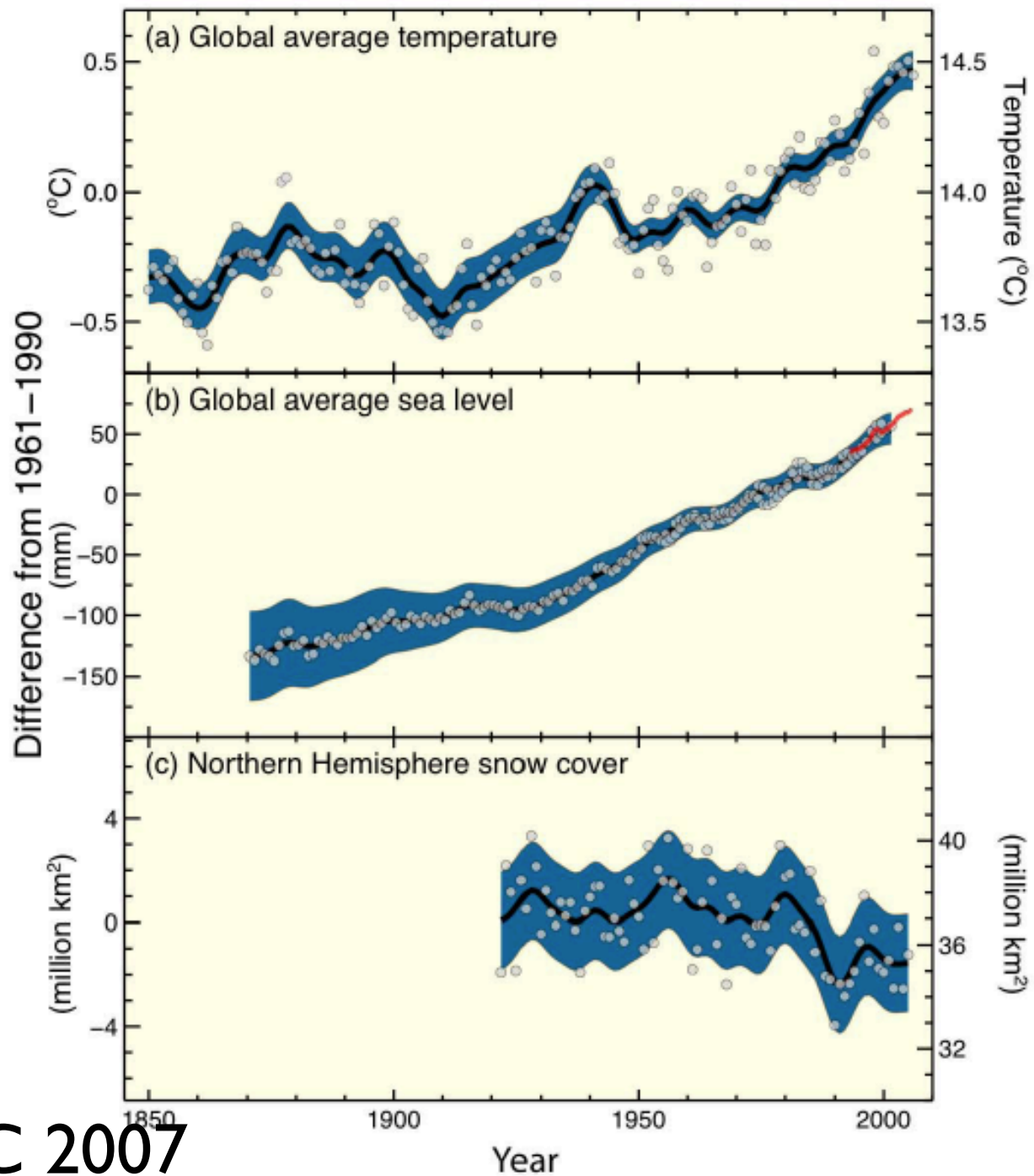


Photo: A Huerta

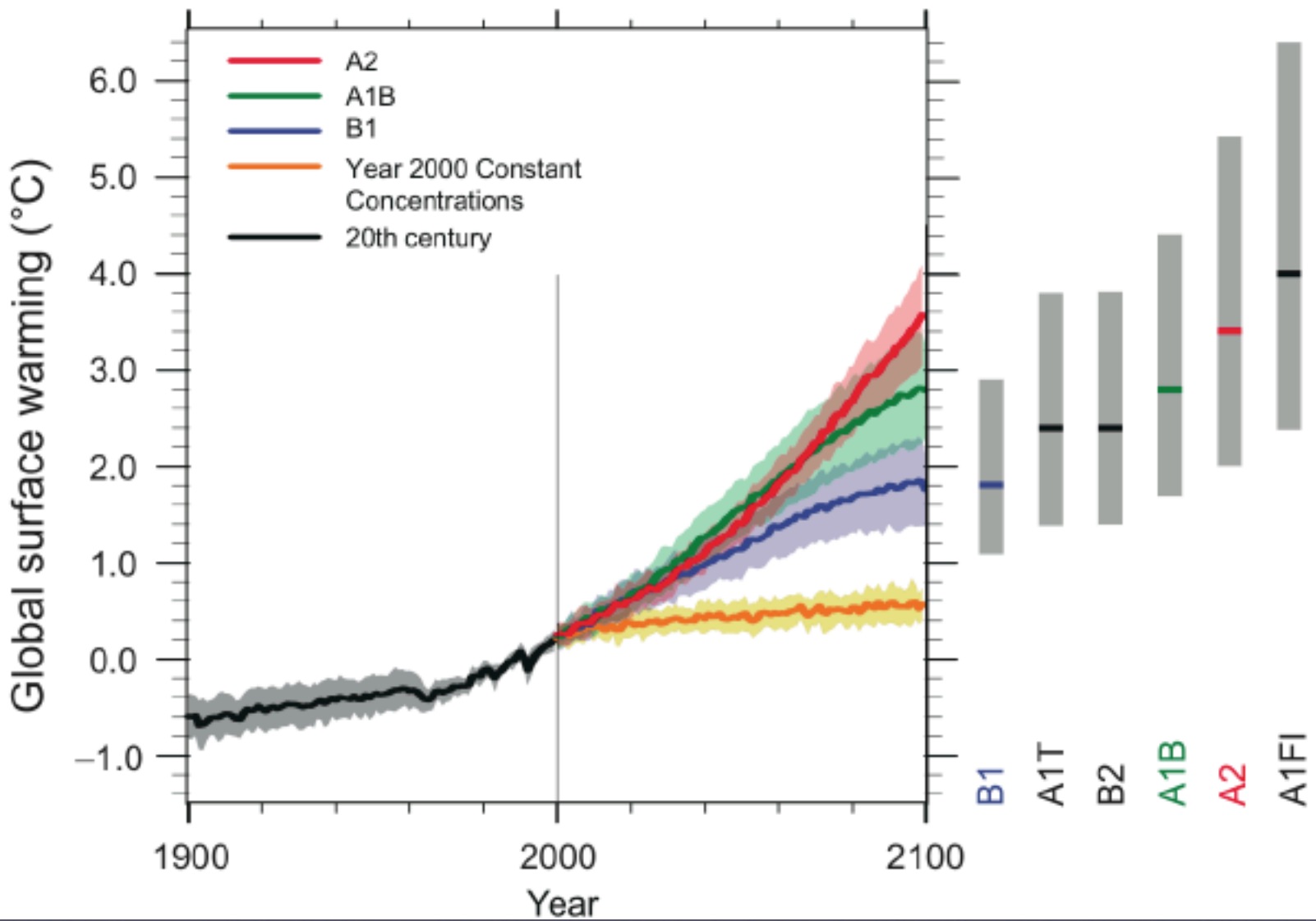
Changes in Greenhouse Gases (cores and modern)

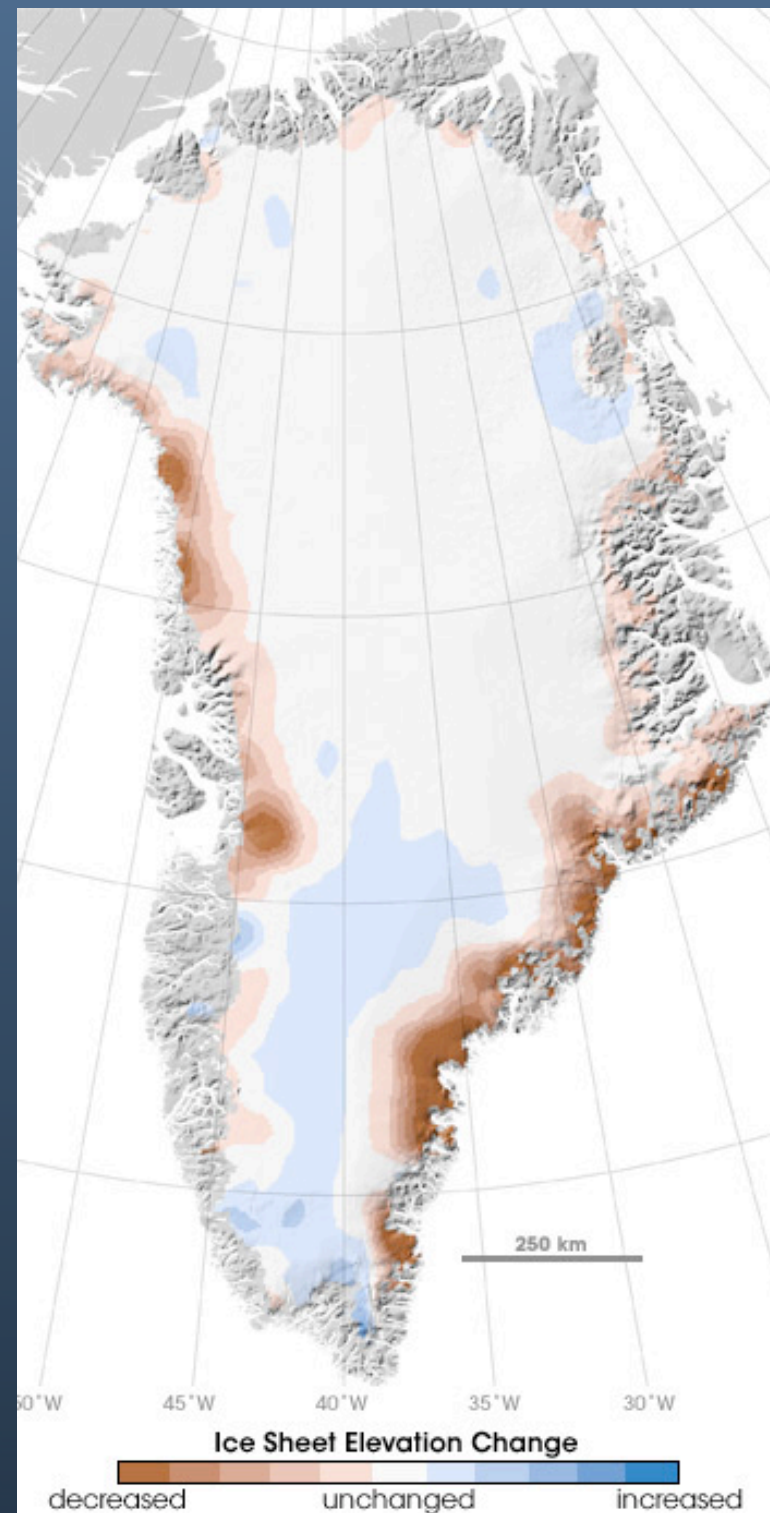
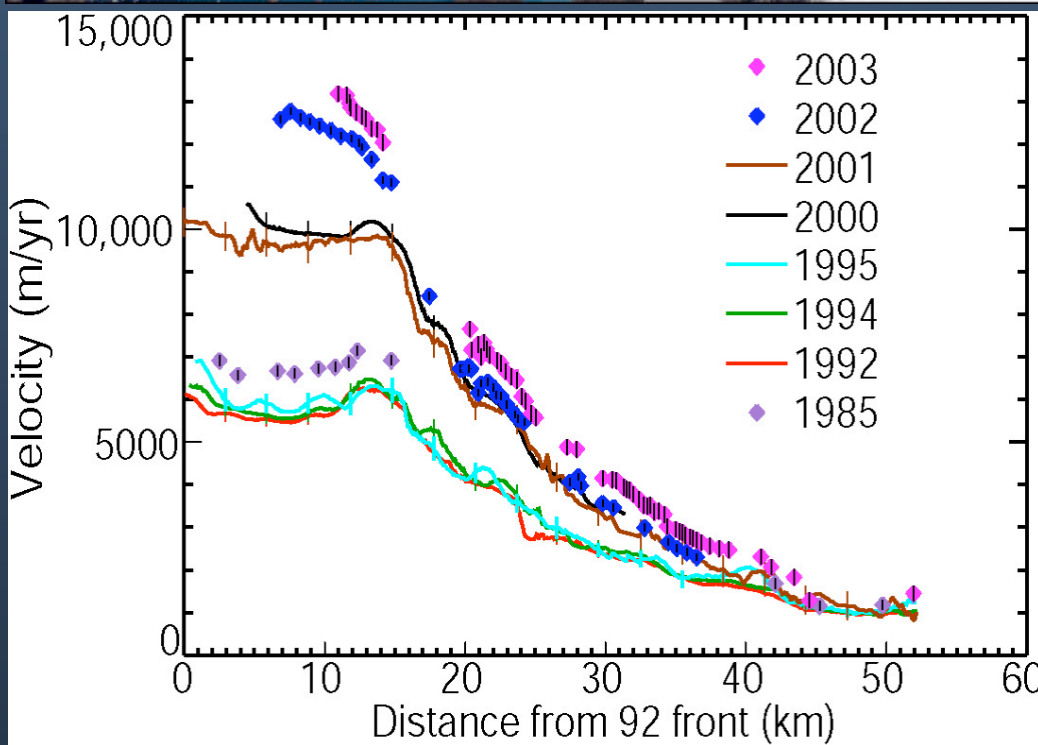
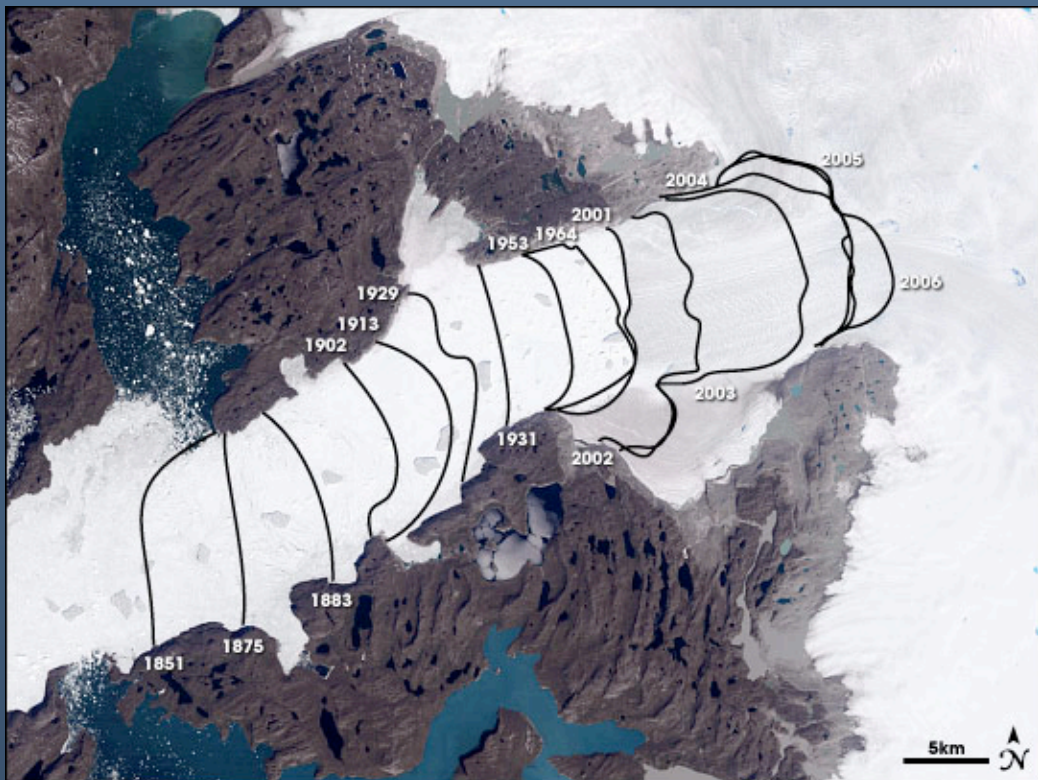


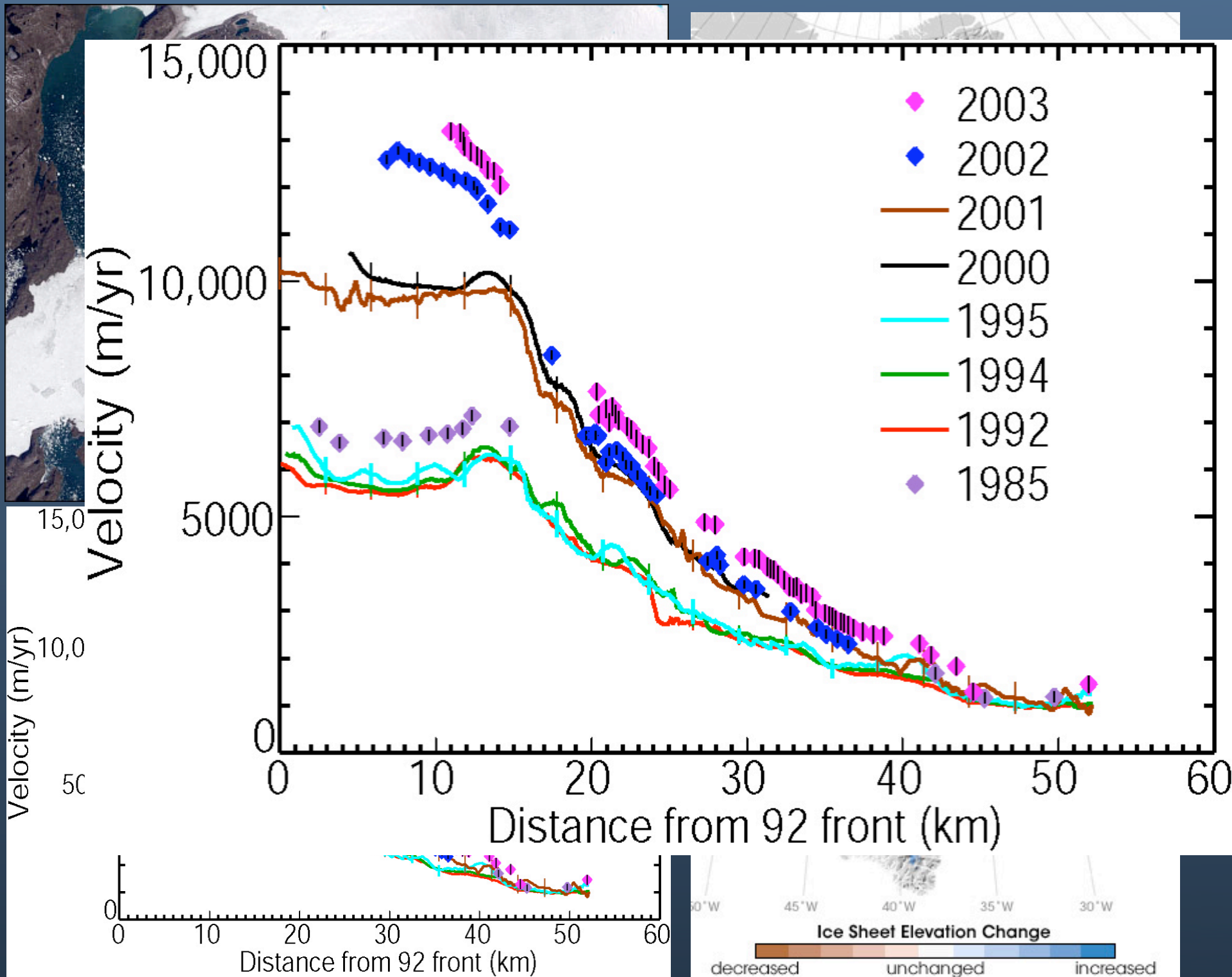
Changes in Temperature, Sea Level and Northern Hemisphere Snow Cover

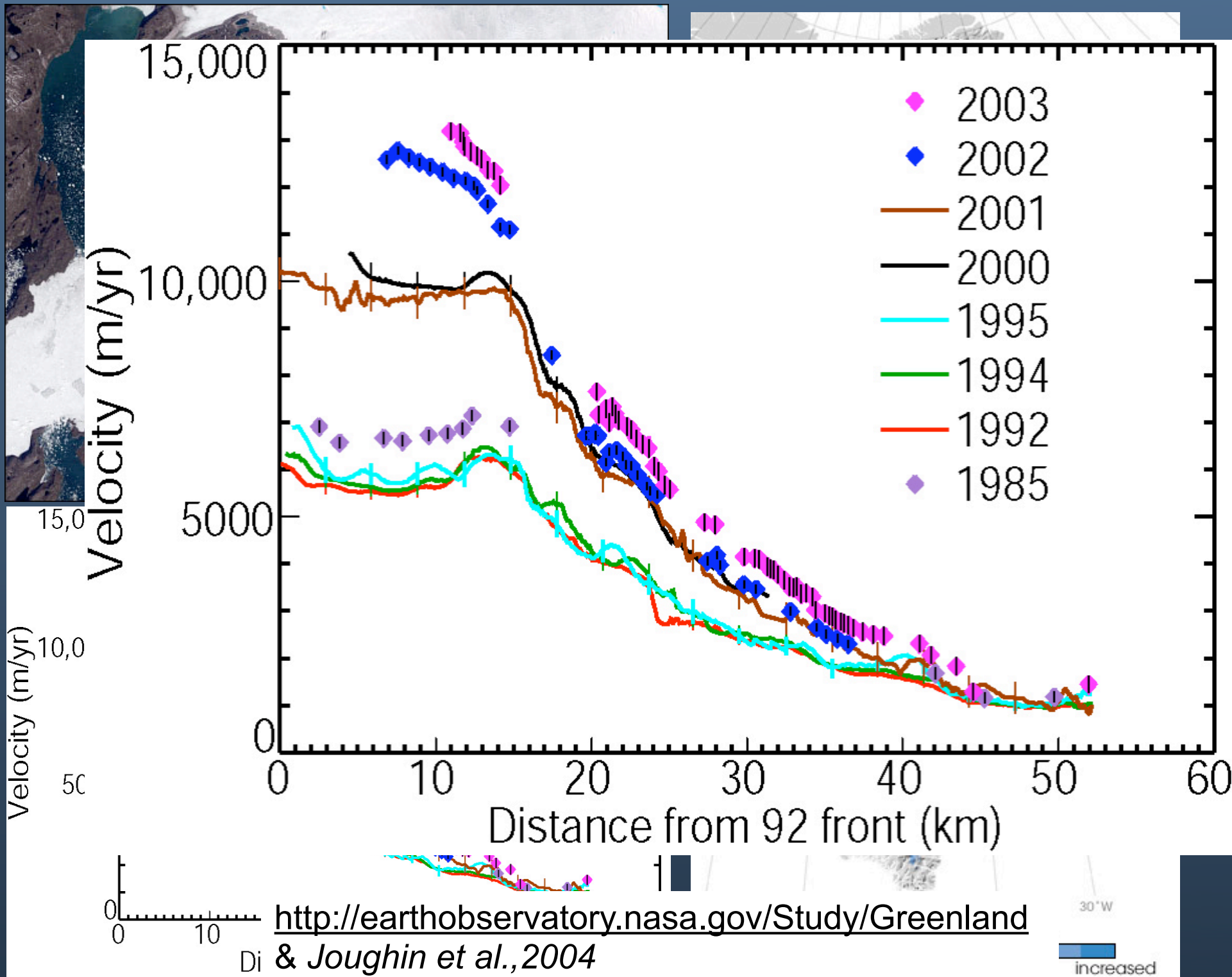


Multi-model Averages and Assessed Ranges for Surface Warming

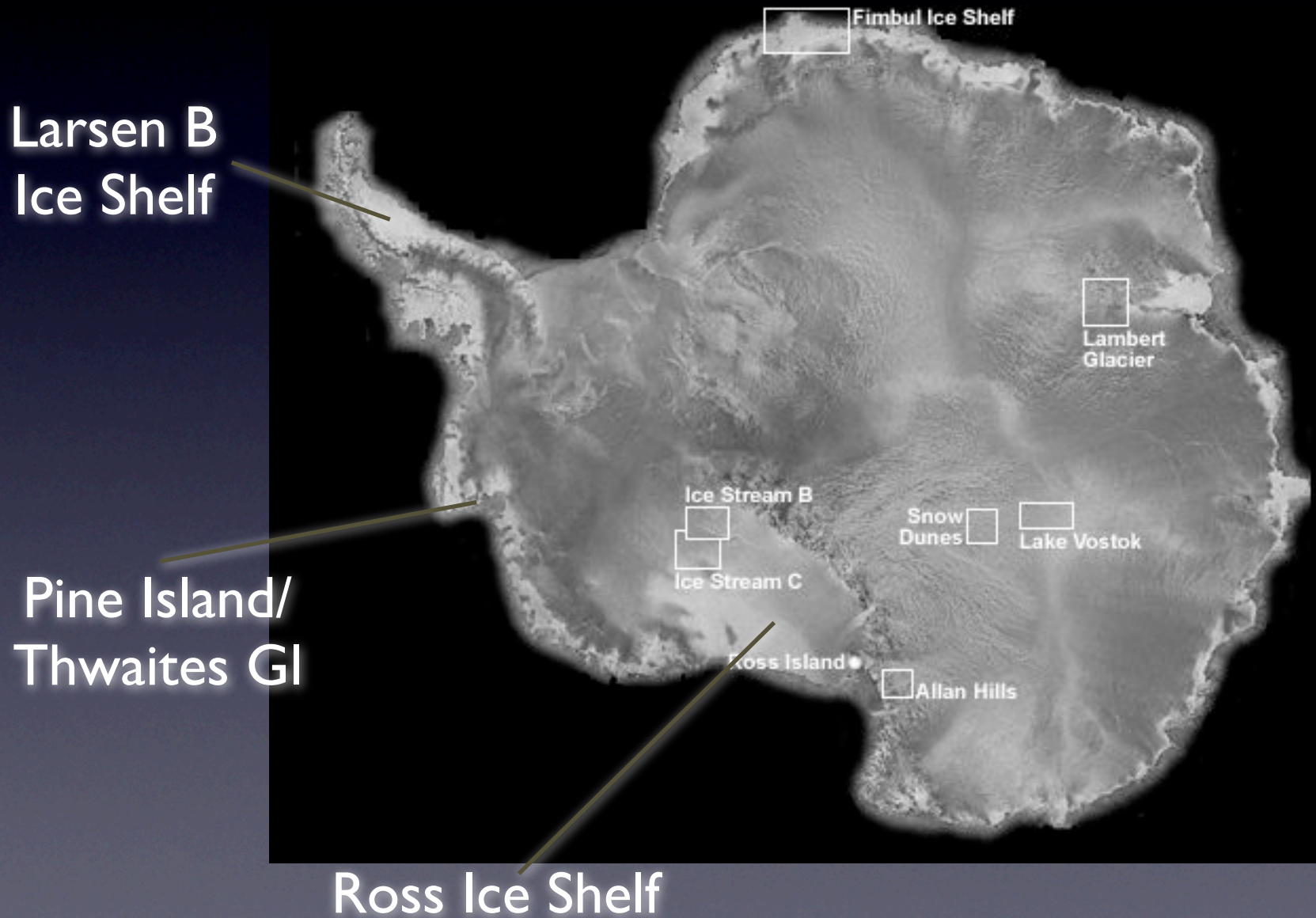




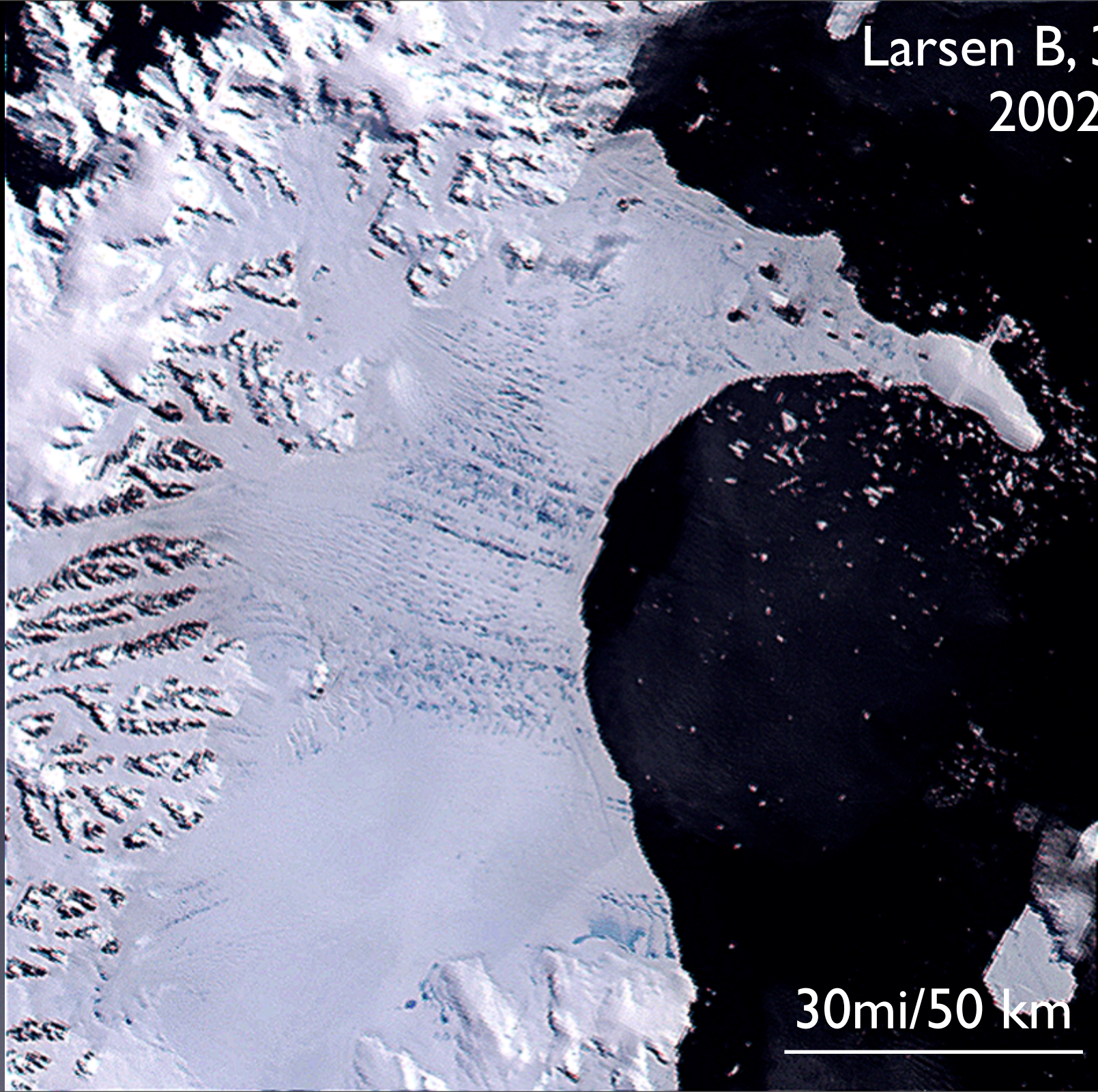




Radarsat image

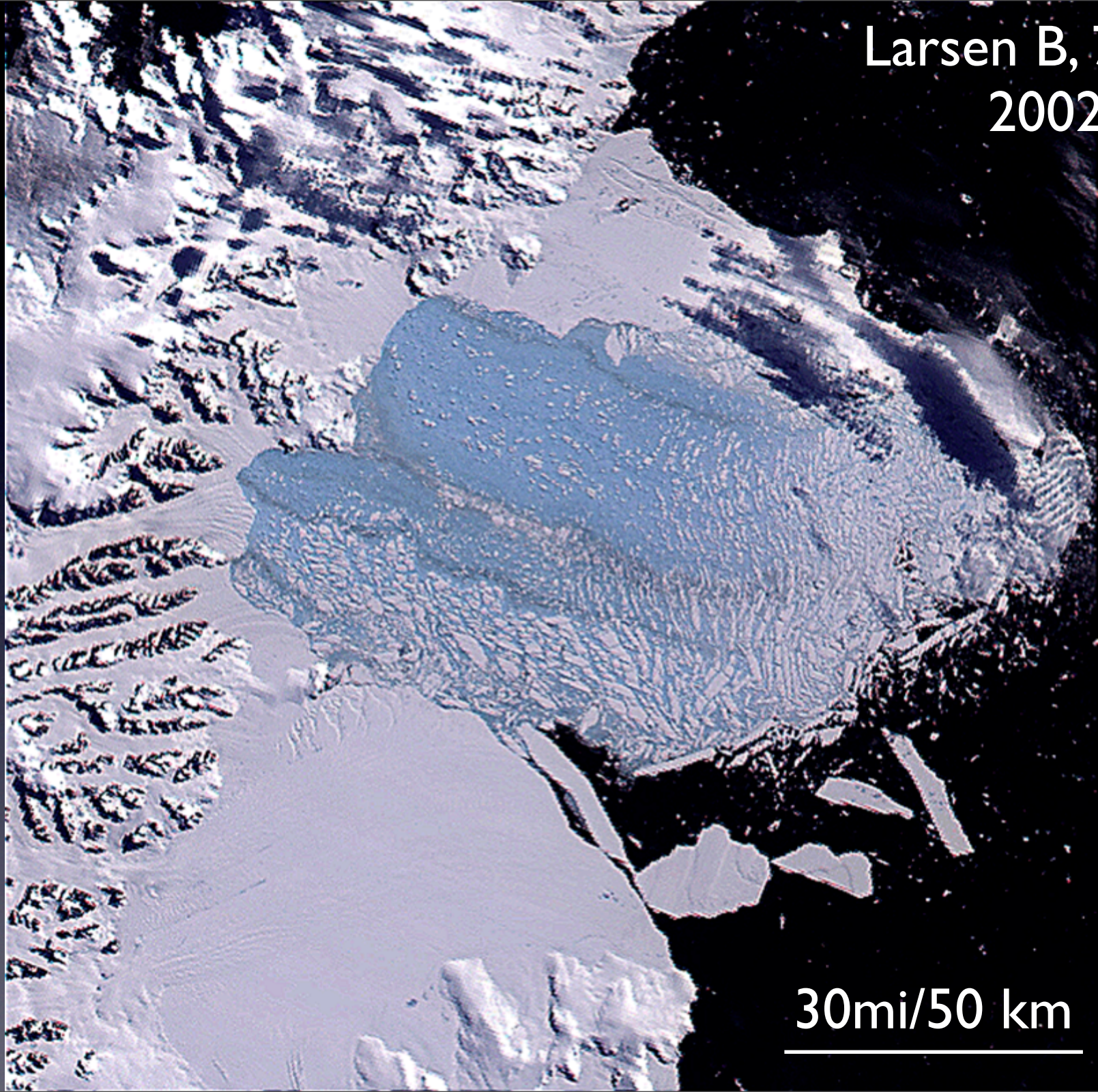


Larsen B, 31 Jan
2002



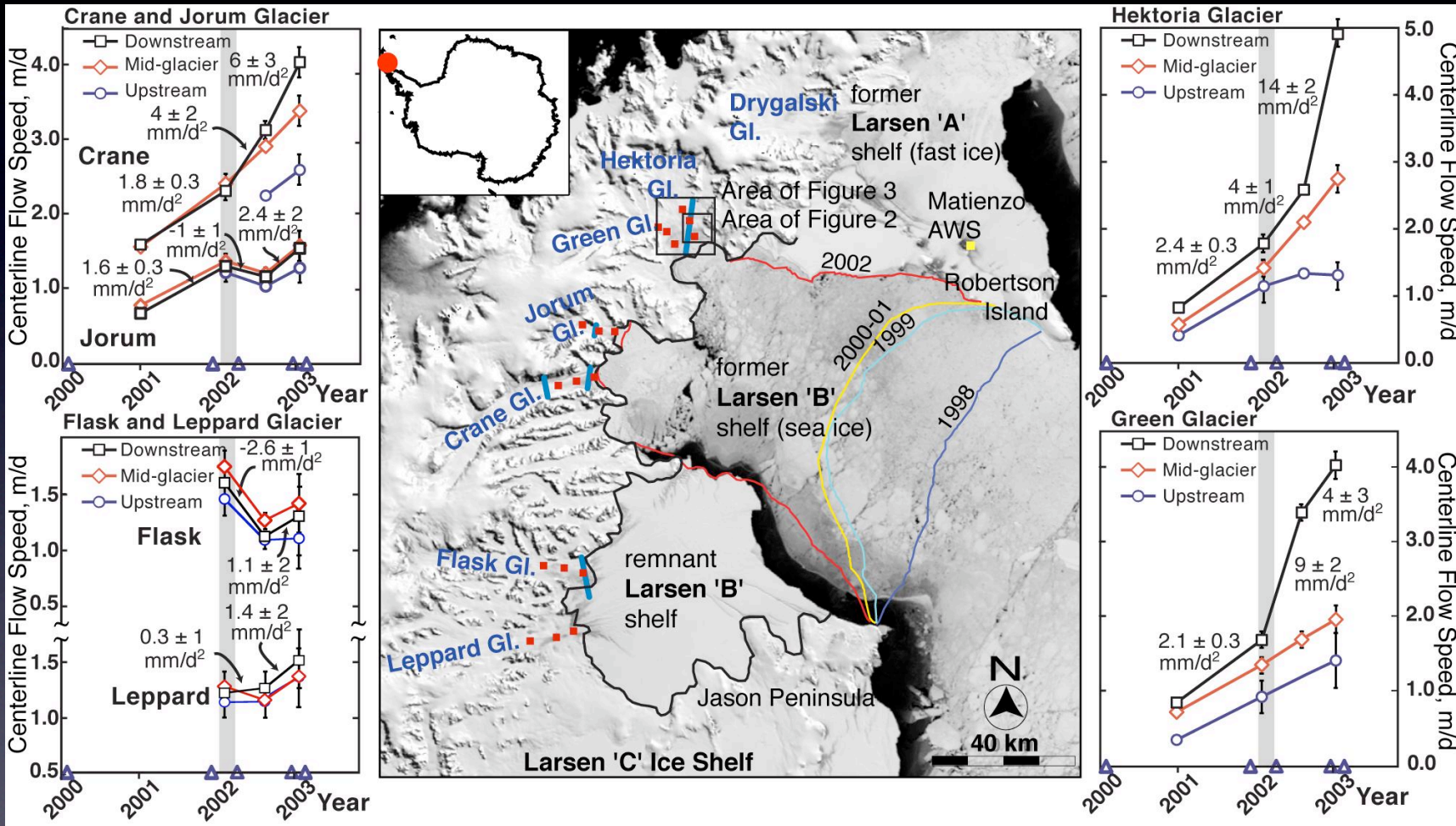
30mi/50 km

Larsen B, 7 Mar
2002

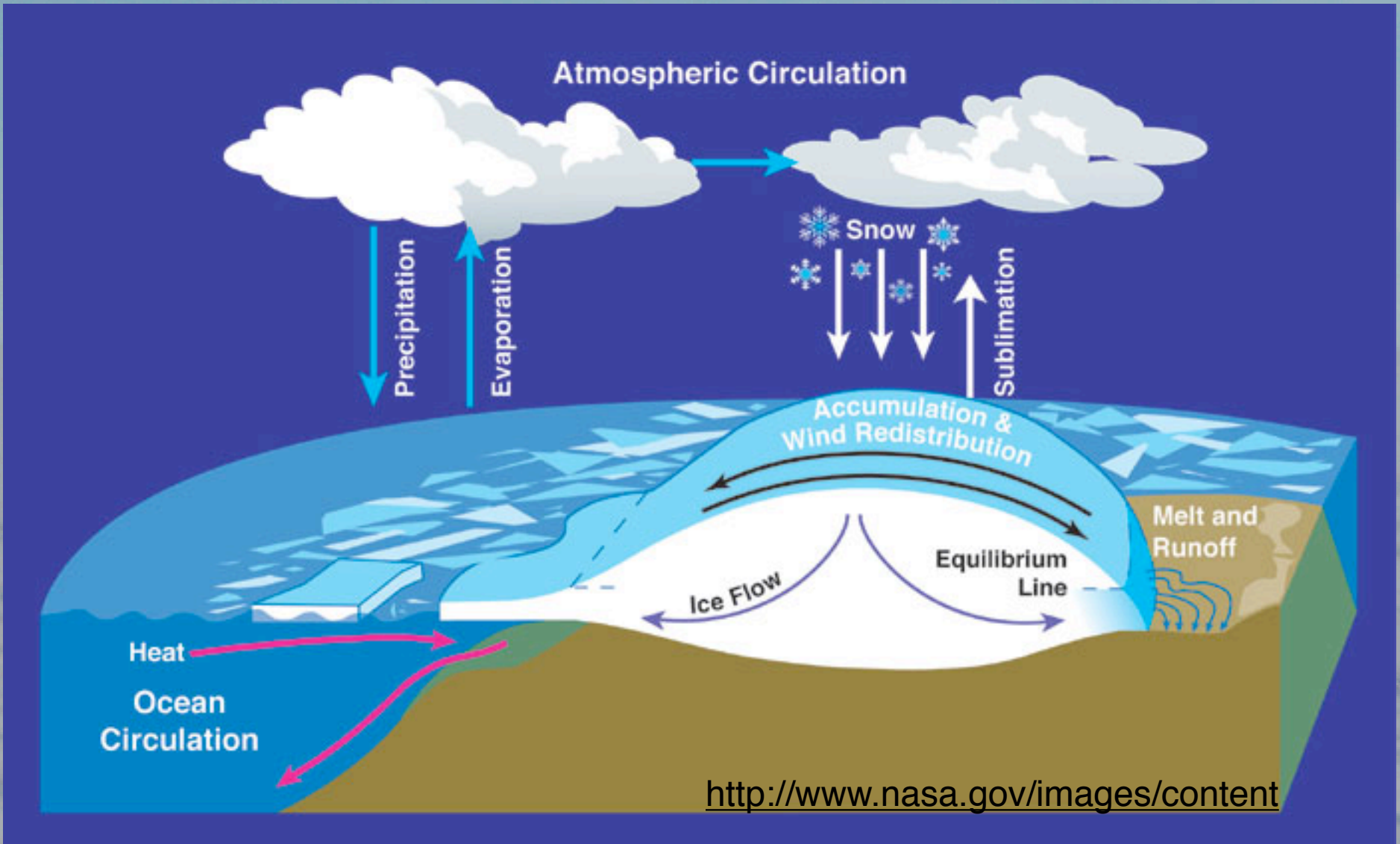


30mi/50 km

Speedup of glaciers feeding Larsen B after distintegration of the ice shelf.



De Angelis and Skvarca, 2003



<http://www.nasa.gov/images/content>













ODEN

ODEN
NORRKÖPING



SPRINKLER WATER

TALLADEGA
NIGHTS
2:45

10/13/01









U.S. AIR FORCE

1103

62nd AW

446th AW

210







*...the waters around you have grown
And accept it that soon
You'll be drenched to the bone...
For the times they are a-changin'.
--Bob Dylan*